

Technical Corner

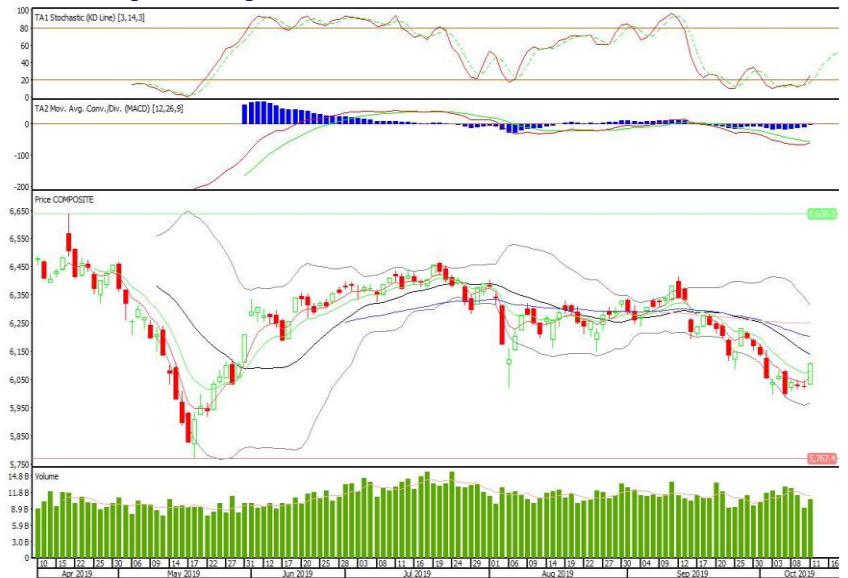
14 Oktober 2019

IHSG

Range: 6.040 - 6.175

---Indeks ditutup di atas EMA5,10 dan membentuk pola white opening marubozu yang merupakan sinyal bullish continuation, stochastic netral dan MACD bullish cross over. Target kenaikan indeks pada level 6.175 kemudian 6.230 dengan *support* di level 6.040 dan 5.975.

IHSG (6.105)



PP London Sumatra Indonesia

Rekomendasi: Buy

---Candle ditutup di atas EMA5,10 dan membentuk pola white opening marubozu yang merupakan sinyal bullish continuation, stochastic netral dan MACD bullish cross over. Target kenaikan harga pada level 1.260 kemudian 1.280 dengan *support* di level 1.210, *cut loss* jika *break* 1.195.

LSIP (1.235)



Indofood CBp Sukses Makmur

Rekomendasi: Buy

---Candle ditutup dengan membentuk pola harami yang merupakan sinyal bullish reversal, stochastic netral sedangkan MACD histogram divergence negatif. Target kenaikan harga pada level 11.800 kemudian 12.050 dengan *support* di level 11.425, *cut loss* jika *break* 11.250.

ICBP (11.625)



Astra International

Rekomendasi: Buy

---Candle ditutup di atas EMA5,10 dengan membentuk pola white marubozu yang merupakan sinyal bullish continuation, stochastic oversold, MACD histogram convergence negatif. Target kenaikan harga pada level 6.675 kemudian 6.875 dengan *support* di level 6.275, *cut loss* jika *break* 6.075.

ASII (6.475)

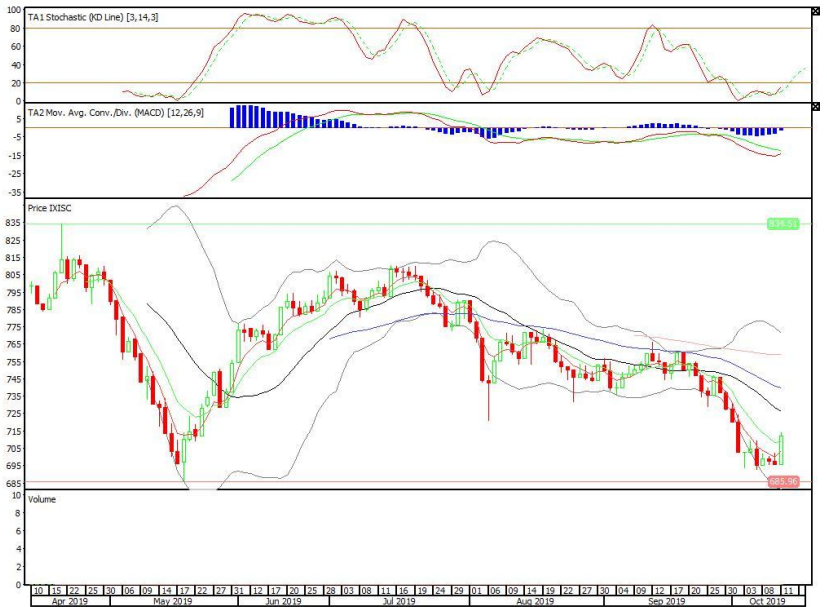


Premier ETF Indonesia Stated-Owned Companies

Rekomendasi: Buy

---Candle ditutup di atas EMA5,10 dengan membentuk pola white opening marubozu yang merupakan sinyal bullish continuation, stochastic oversold, MACD histogram convergence negatif. Target kenaikan harga pada level 728 kemudian 744 dengan *support* di level 695, *cut loss* jika *break* 679.

XISC (711)

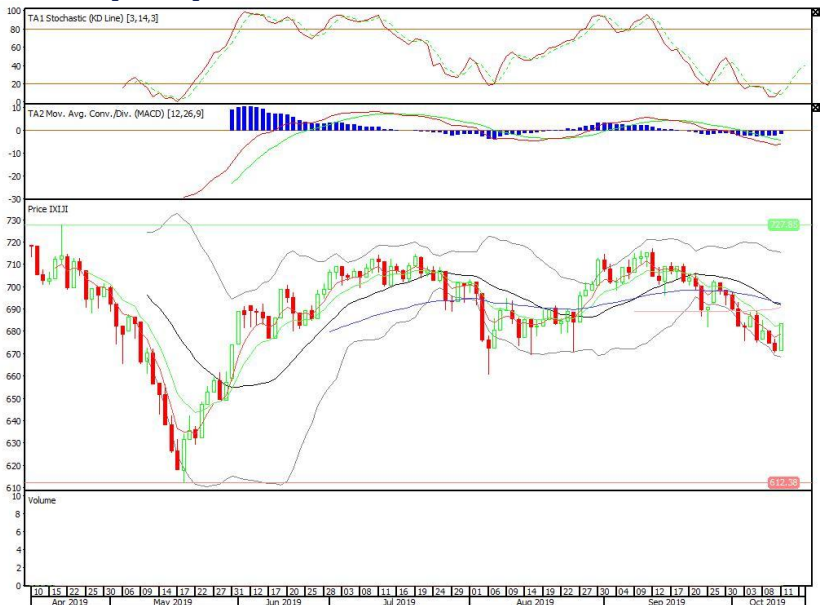


Premier ETF JII

Rekomendasi: Buy

---Candle ditutup di atas EMA5,10 dengan membentuk pola white marubozu yang merupakan sinyal bullish continuation, stochastic oversold, MACD histogram convergence negatif. Target kenaikan harga pada level 695 kemudian 707 dengan *support* di level 671, *cut loss* jika *break* 659.

XIJI (683)

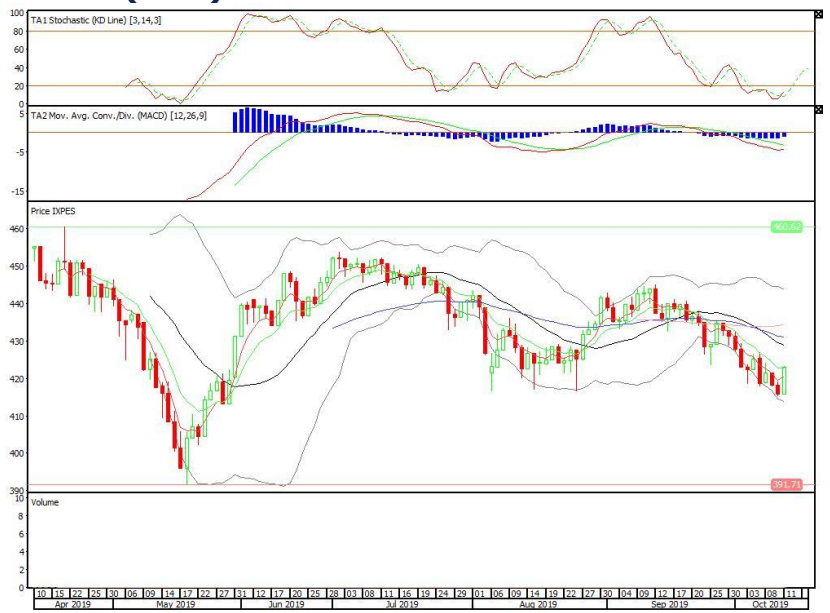


Pinnacle Enhanced Sharia ETF

Rekomendasi: Buy

---Candle ditutup di atas EMA5,10 dengan membentuk pola white marubozu yang merupakan sinyal bullish continuation, stochastic oversold, MACD histogram convergence negatif. Target kenaikan harga pada level 430 kemudian 437 dengan *support* di level 415, *cut loss* jika *break* 408.

XPES (423)



Head Office**PT INDO PREMIER SEKURITAS**

Pacific Century Place 16/F, SCBD Lot 10
Jl. Jend. Sudirman Kav.52-53
Jakarta 12190 - Indonesia
p +62.21.5088.7200

ANALYSTS CERTIFICATION.

The views expressed in this research report accurately reflect the analyst's personal views about any and all of the subject securities or issuers; and no part of the research analyst's compensation was, is, or will be, directly or indirectly, related to the specific recommendations or views expressed in the report.

DISCLAIMERS

This research is based on information obtained from sources believed to be reliable, but we do not make any representation or warranty nor accept any responsibility or liability as to its accuracy, completeness or correctness. Opinions expressed are subject to change without notice. This document is prepared for general circulation. Any recommendations contained in this document does not have regard to the specific investment objectives, financial situation and the particular needs of any specific addressee. This document is not and should not be construed as an offer or a solicitation of an offer to purchase or subscribe or sell any securities. PT. Indo Premier Sekuritas or its affiliates may seek or will seek investment banking or other business relationships with the companies in this report.