

# Technical Corner

14 January 2021

## IHSG

Range: 6.395 – 6.475

---Indeks ditutup di atas EMA5,10 dan membentuk pola doji yang merupakan sinyal indecision, stochastic death cross dan MACD histogram divergence positif.

**Target** kenaikan indeks pada level **6.475** kemudian 6.515 dengan *support* di level 6.395 dan 6.355.

## IHSG (6.435)



## PT Malindo Feedmill, Tbk

Rekomendasi: Buy

---Harga ditutup di atas EMA5,10 dan membentuk pola morning star yang merupakan sinyal bullish reversal, stochastic di zona netral dan MACD histogram convergence negatif. **Target** kenaikan harga pada level **820** kemudian 855 dengan *support* di level 750, *cut loss* jika *break* 715.

## MAIN (785)



# Technical Corner

14 January 2021

## PT Bukit Asam, Tbk

### Rekomendasi: Buy

--- Harga ditutup di atas EMA5,10 dan membentuk pola long white marubozu yang merupakan sinyal bullish continuation, stochastic di zona netral dan MACD histogram convergence negatif. **Target** kenaikan harga pada level **3.130** kemudian 3.220 dengan *support* di level 2.950, *cut loss* jika *break* 2.860.

## PTBA (3.040)



## PT Tower Bersama Infrastructure, Tbk

### Rekomendasi: Buy

---Harga ditutup di atas EMA5,10 dan membentuk pola long white marubozu yang merupakan sinyal bullish continuation, stochastic golden cross dan MACD histogram convergence negatif. **Target** kenaikan harga pada level **1.735** kemudian 1.790 dengan *support* di level 1.625, *cut loss* jika *break* 1.570.

## TBIG (1.680)



# Technical Corner

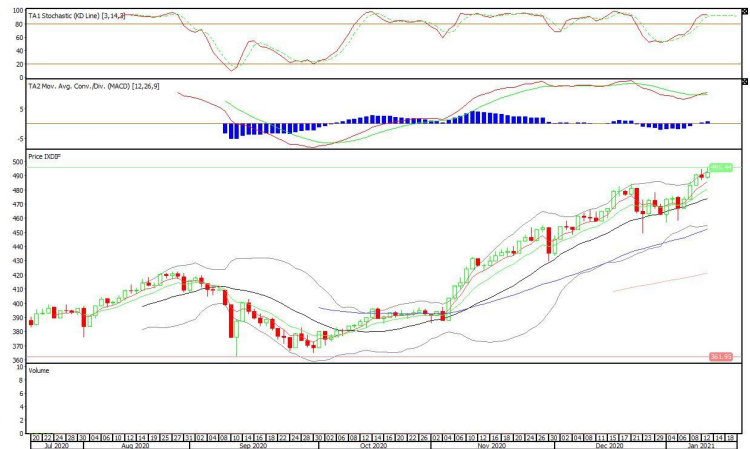
14 January 2021

## Danareka ETF Indonesia Top 40

### Rekomendasi: Buy

--- Harga ditutup di atas EMA5,10 dan membentuk pola long white marubozu yang merupakan sinyal bullish continuation, stochastic death cross dan MACD histogram divergence positif. **Target** kenaikan harga pada level **495** kemudian 498 dengan *support* di level 489, *cut loss* jika *break* 486.

## XDIF (492)

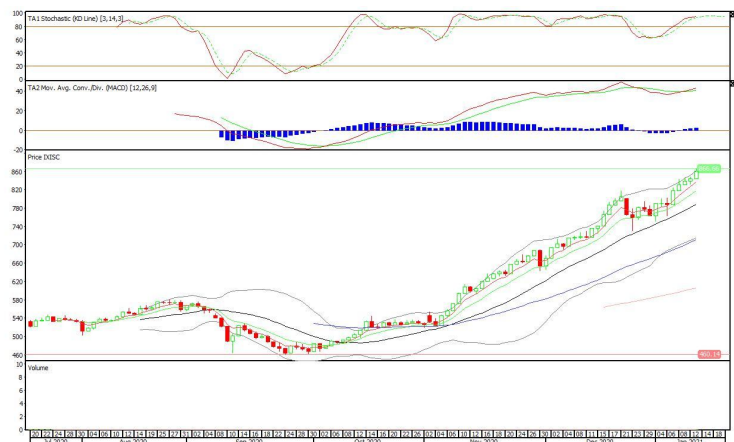


## Premier ETF Indonesia SOC

### Rekomendasi: Buy

--- Harga ditutup di atas EMA5,10 dan membentuk pola white opening marubozu yang merupakan sinyal bullish continuation, stochastic konsisten di zona overbought dan MACD histogram divergence positif. **Target** kenaikan harga pada level **878** kemudian 895 dengan *support* di level 844, *cut loss* jika *break* 827.

## XISC (861)



# Technical Corner

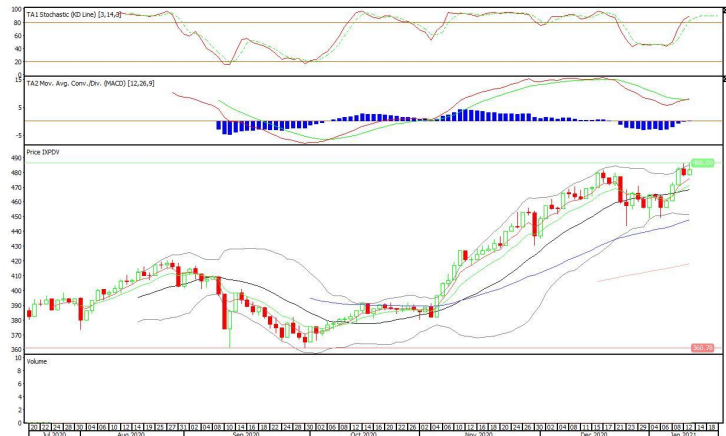
14 January 2021

## Pinnacle Core High Dividend ETF

### Rekomendasi: Buy

--- Harga ditutup di atas EMA5,10 dan membentuk pola white opening marubozu yang merupakan sinyal bullish continuation, stochastic overbought dan MACD bullish cross over. **Target** kenaikan harga pada level **486** kemudian 490 dengan *support* di level 478, *cut loss* jika *break* 474.

### XPDV (482)



**PT INDO PREMIER SEKURITAS**  
 Pacific Century Place 16th Floor SCBD Lot 10  
 Jl. Jend. Sudirman Kav. 52-53  
 Jakarta Selatan 12190 - Indonesia  
 p +62 21 5088 7200

#### ANALYSTS CERTIFICATION

The views expressed in this research report accurately reflect the analyst's personal views about any and all of the subject securities or issuers; and no part of the research analyst's compensation was, is, or will be, directly or indirectly, related to the specific recommendations or views expressed in the report.

#### DISCLAIMERS

This research is based on information obtained from sources believed to be reliable, but we do not make any representation or warranty nor accept any responsibility or liability as to its accuracy, completeness or correctness. Opinions expressed are subject to change without notice. This document is prepared for general circulation. Any recommendations contained in this document does not have regard to the specific investment objectives, financial situation and the particular needs of any specific addressee. This document is not and should not be construed as an offer or a solicitation of an offer to purchase or subscribe or sell any securities. PT. Indo Premier Sekuritas or its affiliates may seek or will seek investment banking or other business relationships with the companies in this report.

**Refer to Important disclosures on the last of this report**