

Technical Corner

25 January 2021

IHSG

Range: 6.200 – 6.420

---Indeks ditutup di bawah EMA5,10 dan membentuk pola long black marubozu yang merupakan sinyal bearish continuation, stochastic death cross dan MACD histogram divergence positif. **Target** pelemahan indeks pada level 6.200 kemudian 6.090 dengan *resist* di level 6.420 dan 6.530.

IHSG (6.307)



PT Indocement Tungal Prakarsa, Tbk

Rekomendasi: Buy on Weakness

---Harga ditutup masih di atas MA20, dan membentuk pola spinning top yang merupakan sinyal indecision, stochastic netral dan MACD histogram convergence positif. **Target** harga beli pada level 14.900 dengan *resist* di level 15.500, kemudian 15.800.

INTP (15.200)



Technical Corner

25 January 2021

PT Ramayana Lestari Sentosa, Tbk

Rekomendasi: Buy on Weakness

--- Harga tertahan EMA50 dan membentuk pola long black marubozu yang merupakan sinyal bearish continuation, stochastic netral dan MACD histogram divergence negatif. **Target** harga beli pada level **760** dengan *resist* di level 800, kemudian 820.

RALS (780)



PT Semen Indonesia, Tbk

Rekomendasi: Buy on Weakness

--- Harga ditutup membentuk pola doji yang merupakan sinyal indecision, stochastic netral dan MACD histogram divergence positif. **Target** harga beli pada level **11.925** dengan *resist* di level 12.300, kemudian 12.500.

SMGR (12.150)



Technical Corner

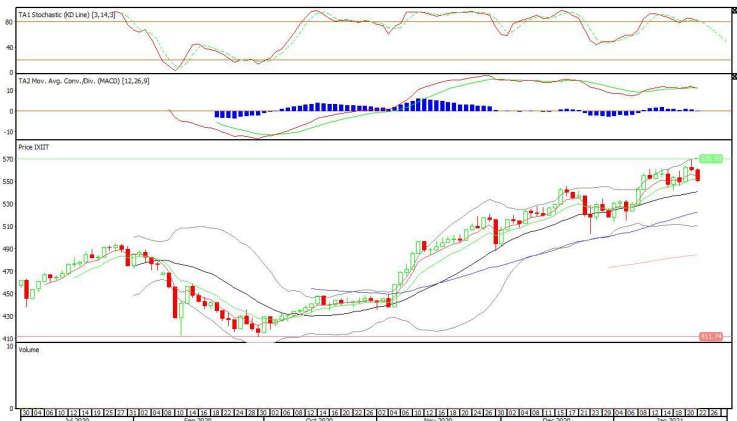
25 January 2021

Premier ETF IDX 30

Rekomendasi: Sell

--- Harga ditutup di bawah EMA5,10 dan membentuk pola long black marubozu yang merupakan sinyal bearish continuation, stochastic death cross dan MACD bearish cross over. **Target** pelemahan harga pada level **542** kemudian 533 dengan *resist* di level 560, kemudian 569.

XIIT (551)



XMTS (482)

ETF MNC36 Likuid

Rekomendasi: Sell

--- Harga ditutup di bawah EMA5,10 dan membentuk pola long black marubozu yang merupakan sinyal bearish continuation, stochastic death cross dan MACD histogram divergence negatif. **Target** pelemahan harga pada level **473** kemudian 464 dengan *resist* di level 491, kemudian 500.



Technical Corner

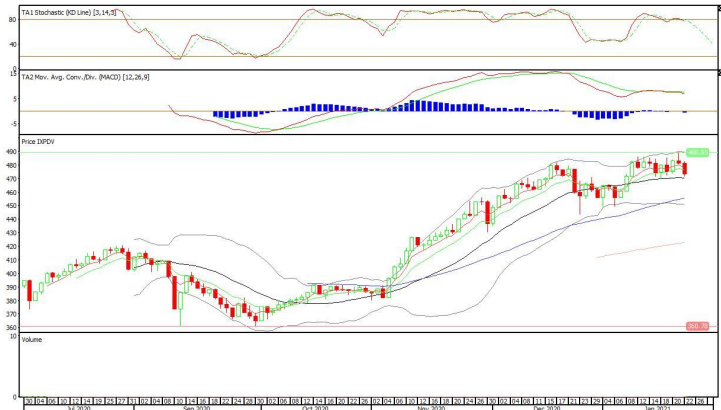
25 January 2021

XPDV (473)

Pinnacle Core High Dividend ETF

Rekomendasi: Sell

--- Harga ditutup dibawah EMA5,10 dan membentuk pola long black marubozu yang merupakan sinyal bearish continuation, stochastic death cross dan MACD histogram divergence negatif. **Target** pelemahan harga pada level **465** kemudian 457 dengan *resist* di level 481, kemudian 489.



PT INDO PREMIER SEKURITAS
 Pacific Century Place 16th Floor SCBD Lot 10
 Jl. Jend. Sudirman Kav. 52-53
 Jakarta Selatan 12190 - Indonesia
 p +62 21 5088 7200

ANALYSTS CERTIFICATION

The views expressed in this research report accurately reflect the analyst's personal views about any and all of the subject securities or issuers; and no part of the research analyst's compensation was, is, or will be, directly or indirectly, related to the specific recommendations or views expressed in the report.

DISCLAIMERS

This research is based on information obtained from sources believed to be reliable, but we do not make any representation or warranty nor accept any responsibility or liability as to its accuracy, completeness or correctness. Opinions expressed are subject to change without notice. This document is prepared for general circulation. Any recommendations contained in this document does not have regard to the specific investment objectives, financial situation and the particular needs of any specific addressee. This document is not and should not be construed as an offer or a solicitation of an offer to purchase or subscribe or sell any securities. PT. Indo Premier Sekuritas or its affiliates may seek or will seek investment banking or other business relationships with the companies in this report.

Refer to Important disclosures on the last of this report